



## Hard Chess Puzzle # 0136

By

G Bud Games  
<https://gbud.in>

February 15, 2022

## Contents

<b>Hard Chess puzzle # 0136 - Mate in 4 moves</b>	<b>4</b>
Hard chess puzzle 0136 . . . . .	4
Solution to hard chess puzzle 0136 . . . . .	5
Solution 1 . . . . .	5
Right moves for the solution to the hard chess puzzle 0136	9
Explanation for the moves . . . . .	9
Categories of hard chess puzzle 0136 . . . . .	10
hard chess puzzle 0136 chart . . . . .	10
How to view the solution to hard chess puzzle 0136 . . . . .	12
How to get help for moves in the hard chess puzzle 0136 . . . . .	13
Play chess for free . . . . .	14

## List of Figures

1	Solve this hard chess puzzle 0136. Mate in 4 moves @ <a href="https://gbud.in/g4zqyk3">https://gbud.in/g4zqyk3</a> . . . . .	4
2	Solve this hard chess puzzle online with solution @ <a href="https://gbud.in/g4zqyk3">https://gbud.in/g4zqyk3</a> . . . . .	4
3	Initial board position of hard chess puzzle 0136 . . . . .	5
4	Nc3+ . . . . .	6
5	Ne5 . . . . .	6
6	Qxe5+ . . . . .	7
7	Be4 . . . . .	7
8	Qxe4+ . . . . .	8
9	Qe2 . . . . .	8
10	Qxe2# . . . . .	9
11	hard chess puzzle 136 chart 1 . . . . .	10
12	hard chess puzzle 136 chart 2 . . . . .	11
13	hard chess puzzle 136 chart 3 . . . . .	11
14	hard chess puzzle 136 chart 4 . . . . .	12
15	Click the solution button to view solutions @ <a href="https://gbud.in/g4zqyk3">https://gbud.in/g4zqyk3</a> . . . . .	12
16	Click the help button to get help on next move @ <a href="https://gbud.in/g4zqyk3">https://gbud.in/g4zqyk3</a> . . . . .	13
17	Solve more hard puzzles @ <a href="https://gbud.in/chshdpz">https://gbud.in/chshdpz</a> . . . . .	13
18	Solve other puzzles @ <a href="https://gbud.in/chsgppz">https://gbud.in/chsgppz</a> . . . . .	13
19	Play chess online for free. Solve puzzles and play with friends	14

20    Solve this puzzle online by scanning this QR code or go to  
      the link below . . . . . 15

## Hard Chess puzzle # 0136 - Mate in 4 moves

Solve this hard chess puzzle and improve your chess games through improvement of your chess strategies and chess tactics. This hard puzzle is a subset of [kids games](#).

Puzzle No : 0136

Difficulty level : hard

Description : Mate in 4 moves

Next Move : Black

Player level : Advanced

Short URL for puzzle : <https://gbud.in/g4zqyk3>

### Hard chess puzzle 0136

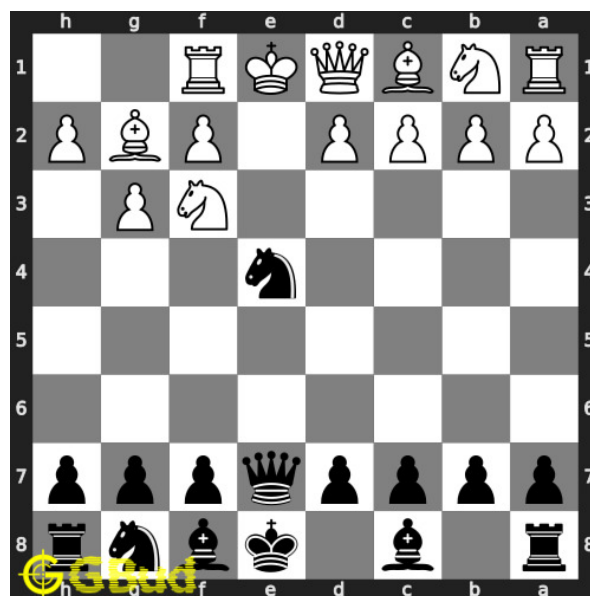


Figure 1: Solve this hard chess puzzle 0136. Mate in 4 moves @ <https://gbud.in/g4zqyk3>



Figure 2: Solve this hard chess puzzle online with solution @ <https://gbud.in/g4zqyk3>

Dont forget to check out [chess puzzles](#), [easy chess puzzles](#), [medium chess puzzles](#), [hard chess puzzles](#) and [chess puzzles collections](#) .

## Solution to hard chess puzzle 0136

At this puzzle, next [move](#) is by [Black](#). The objective of the puzzle is to mate in 4 moves.

See the interactive solution at the [puzzle page](#)

### Solution 1

**Initial board position** This is the initial board position of hard chess puzzle 0136.

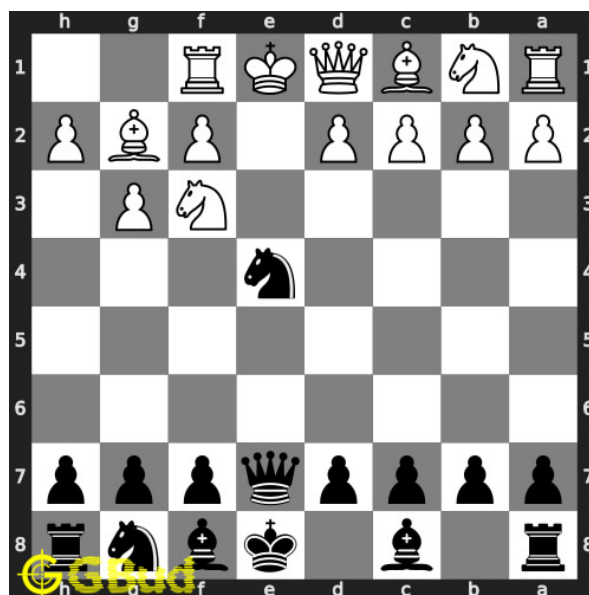


Figure 3: Initial board position of hard chess puzzle 0136

**Move 1** Move by black

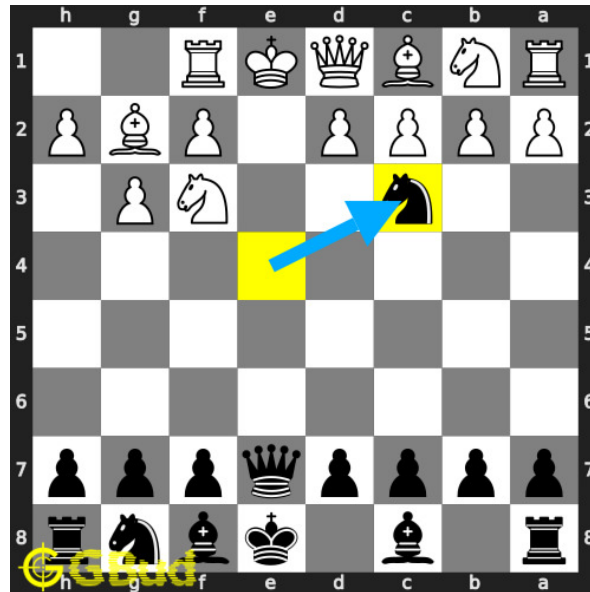


Figure 4: Nc3+

this is a discovered attack since the movement of the **knight** results in **check** from the **queen**.

**Move 2** Move by white

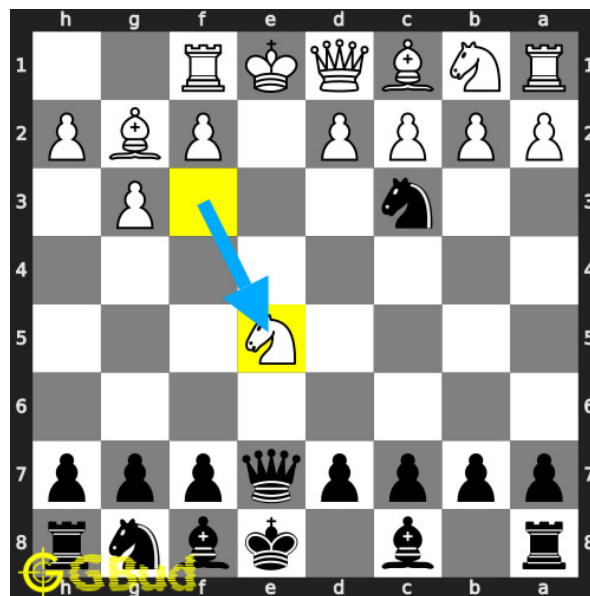


Figure 5: Ne5

opponent's **knight** moves to e5 to block the **check** threat.

**Move 3** Move by black

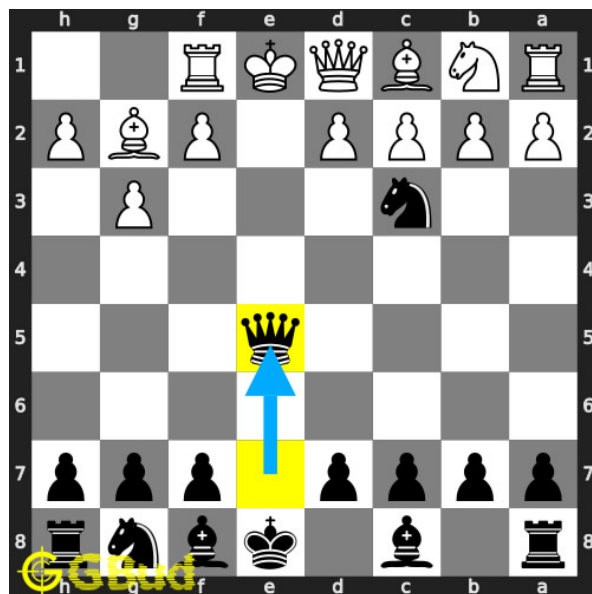


Figure 6: Qxe5+

your **queen captures** opponent's **knight** and gives next **check**.

**Move 4** Move by white



Figure 7: Be4

opponent's **bishop moves** to **e4** to block the **check**.

**Move 5** Move by black

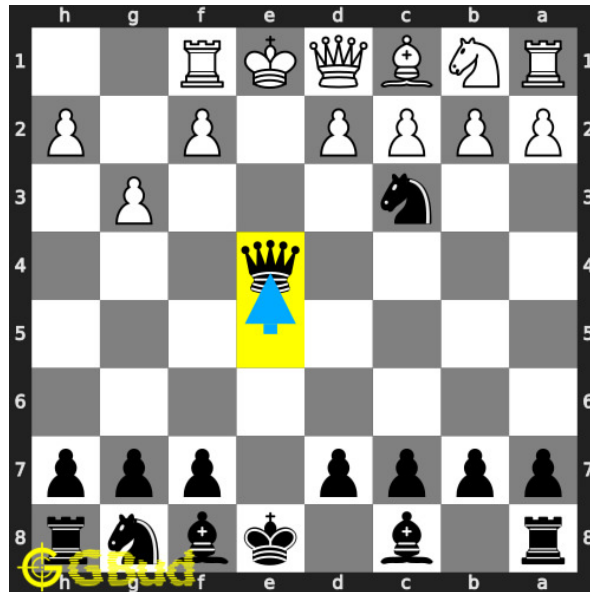


Figure 8: Qxe4+

your **queen captures** opponent's **bishop** and gives next **check**.

**Move 6** Move by white



Figure 9: Qe2

opponent's **queen moves** to **e2** to block the **check**.

**Move 7** Move by black



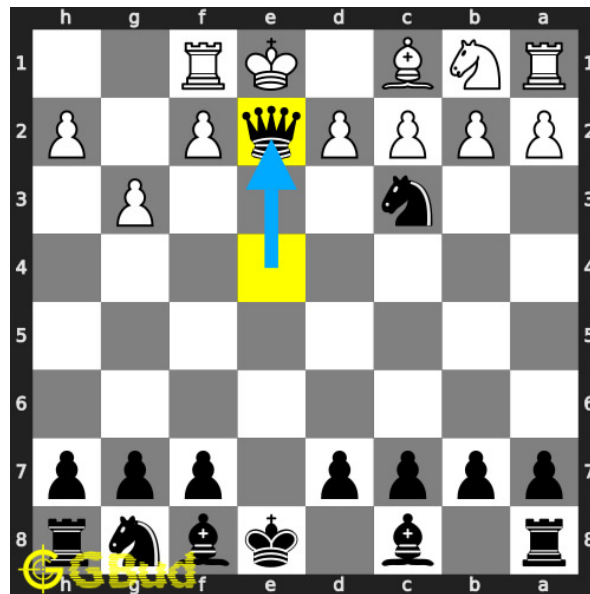


Figure 10: Qxe2#

your **queen captures** opponent's **queen** and **checkmate**. opponent's **king** can't **capture** your **queen** since it is supported by **knight**. this is how you can **mate** in 4 **moves**.

### Right moves for the solution to the hard chess puzzle 0136

Based on the objective of the puzzle, you have to make the right moves. Following are the right moves

1. Nc3+, Qxe5+, Qxe4+, Qxe2#

### Explanation for the moves

1. Nc3+ - This is a discovered attack since the movement of the knight results in check from the queen.
2. Ne5 - Opponent's knight moves to e5 to block the check threat.
3. Qxe5+ - Your queen captures opponent's knight and gives next check.
4. Be4 - Opponent's bishop moves to e4 to block the check.
5. Qxe4+ - Your queen captures opponent's bishop and gives next check.
6. Qe2 - Opponent's queen moves to e2 to block the check.
7. Qxe2# - Your queen captures opponent's queen and checkmate. Opponent's king can't capture your queen since it is supported by knight. This is how you can mate in 4 moves.

8. For right move - You know exactly which moves will give you victory.  
Good job
9. For wrong move - It seems you missed the opportunity to checkmate.  
Try again

## Categories of hard chess puzzle 0136

This hard chess puzzle falls in these categories.

1. [Hard chess puzzles](#)
2. [Endgame puzzles in chess](#)
3. [Strategy puzzles in chess](#)
4. [Mate in 4 puzzles in chess](#)
5. [Queen puzzles in chess](#)
6. [Knight puzzles in chess](#)

## hard chess puzzle 0136 chart



Figure 11: hard chess puzzle 136 chart 1



Figure 12: hard chess puzzle 136 chart 2



Figure 13: hard chess puzzle 136 chart 3

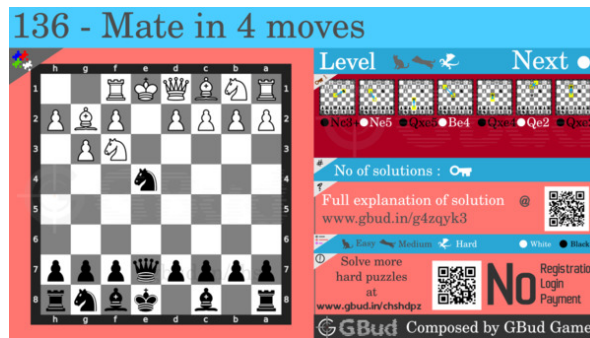


Figure 14: hard chess puzzle 136 chart 4

## How to view the solution to hard chess puzzle 0136

To view the [solution to this puzzle](#), follow the steps given below

1. Go to the [puzzle page](#)
2. Click the solution button (Key as shown [below](#)) to view the solution



Figure 15: Click the solution button to view solutions @ <https://gbud.in/g4zqyk3>

## How to get help for moves in the hard chess puzzle 0136

To get help or the possible next moves in the puzzle, , follow the steps given below

1. Go to the [puzzle page](#)
2. Click the help button (exclamation mark as shown [below](#)) to get help or suggestion on next possible [move](#)



Figure 16: Click the help button to get help on next move @ <https://gbud.in/g4zqyk3>



Figure 17: Solve more hard puzzles @ <https://gbud.in/chshdpz>



Figure 18: Solve other puzzles @ <https://gbud.in/chsgppz>

## Play chess for free

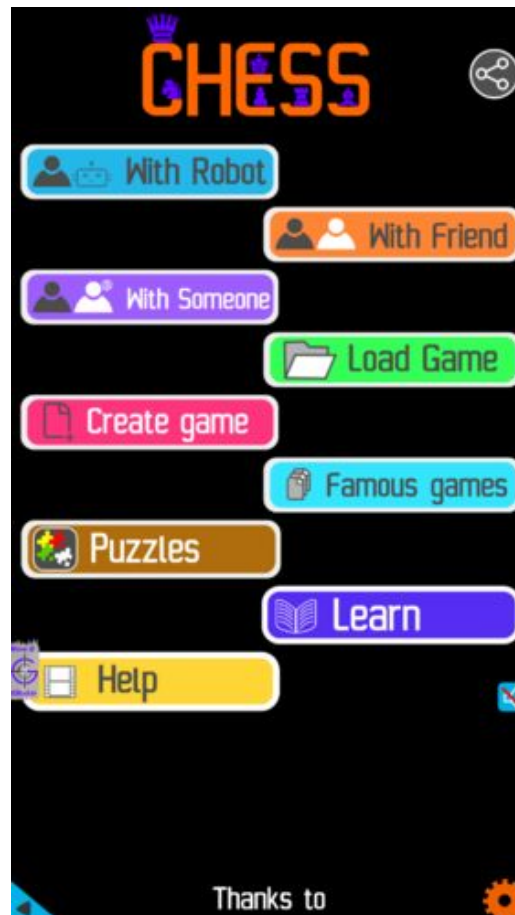


Figure 19: Play chess online for free. Solve puzzles and play with friends

Play chess for free at <https://gbud.in/chs>

We present you a platform to play chess online with friends for free. No need to install any app. You can play chess for free without registration or login.

Simple. You can do several chess related activities.

1. solve chess puzzles
2. learn about chess
3. play chess with computer
4. play chess with friend
5. create your own chess games

6. [fen viewer](#)
7. [fen editor](#)
8. [fen generator](#)
9. [pgn viewer](#)
10. [chess board editor](#)
11. [view famous chess games.](#)



Figure 20: Solve this puzzle online by scanning this QR code or go to the link below

<https://gbud.in/g4zqyk3>

Read the latest article on Hard Chess puzzle # 0136 - Mate in 4 moves by scanning this QR code or click the link

Previous article : « [Hard Chess puzzle # 0135 - Mate in 3 moves](#)

Next article : [Hard Chess puzzle # 0137 - Mate in 3 moves](#) »

[Back to top](#)

[Contact Us](#)